



**Government of India
Ministry of Earth Sciences
India Meteorological Department**



Press Release

Date: 12th August, 2025

Time of Issue: 1330 hours IST

Subject: i) Heavy to very heavy rainfall likely at a few places over Uttarakhand & at isolated places over Himachal Pradesh during next 7 days. Isolated extremely heavy ($\geq 21\text{cm}$) likely over Uttarakhand on 13th August, 2025. Isolated heavy to very heavy rainfall likely over Jammu during 12th-15th August.

ii) Increase in rainfall activity over east central India and adjoining north peninsular India; with a fresh spell of heavy to very heavy rainfall over Madhya Pradesh, Vidarbha, Odisha, Chhattisgarh, Coastal Andhra Pradesh, Rayalaseema and Telangana during 13th to 17th August with extremely heavy falls over Telangana on 13th & 14th August.

iii) Isolated heavy to very heavy rainfall likely over Sub-Himalayan West Bengal & Sikkim, Arunachal Pradesh, Assam & Meghalaya during 12th-14th August with isolated extremely heavy falls over Sub-Himalayan West Bengal, Sikkim and Assam on 12th August.

Realised weather during past 24 hours till 0830 hours IST of today, the 12th August, 2025:

- ❖ Heavy to very heavy rainfall with extremely heavy falls ($\geq 21\text{cm}$) has been recorded at isolated places over Jammu.
- ❖ Heavy to very heavy rainfall (7-20 cm) has been recorded at isolated places over Punjab, Himachal Pradesh, Uttarakhand, East Uttar Pradesh, Assam, Telangana; **Heavy rainfall (7-11 cm)** at isolated places over Haryana, Madhya Pradesh, Andaman Islands, West Bengal, Odisha, Bihar, Chhattisgarh, Coastal Andhra Pradesh, Rayalaseema and Arunachal Pradesh.

For more details of realised weather, kindly refer [Annexure I](#).

i. Weather Systems, Forecast and Warnings (refer to [Annexure II & III](#)):

- ❖ The western end of monsoon trough at mean sea level runs north of its normal position and eastern end runs near the foothills of the Himalayas at mean sea level.
- ❖ An **upper air cyclonic circulation** over central parts of Bay of Bengal in lower & middle tropospheric levels. Under its influence; A **Low-Pressure area** is likely to form over westcentral & adjoining northwest Bay of Bengal on 13th August, 2025 and likely to become more marked during subsequent 48 hours.
- ❖ An **upper air cyclonic circulation** over North Interior Karnataka and an **east-west trough** runs from cyclonic circulation over central parts of Bay of Bengal to cyclonic circulation over North Interior Karnataka at middle tropospheric levels.
- ❖ An **upper air cyclonic circulation** lies over northwest Uttar Pradesh in lower tropospheric levels.
- ❖ An **upper air cyclonic circulation** lies over northeast Assam in lower tropospheric levels.
- ❖ A **trough** runs from south Bihar to north Odisha at lower tropospheric levels.
- ❖ A Western Disturbance seen as a cyclonic circulation over north Pakistan & adjoining Jammu & Kashmir in lower & middle tropospheric levels

Under the influence of these systems, the following weather is likely:

Northwest India:

- ❖ **Extremely heavy rainfall** very likely at isolated places over Uttarakhand on 13th August.
- ❖ Isolated **heavy rainfall** likely over Jammu-Kashmir during 12th-15th; Himachal Pradesh, Uttarakhand during 12th-18th; Haryana, Chandigarh, West Uttar Pradesh during 12th-15th; East Uttar Pradesh during 12th-14th; East

Rajasthan during 15th-18th August with **very heavy rainfall** over Jammu, Himachal Pradesh during 12th-14th; Uttarakhand on 12th, during 14th-18th; Uttar Pradesh on 13th & 14th August.

- ❖ Light/moderate rainfall at many places accompanied with thunderstorm & lightning likely over Jammu-Kashmir-Ladakh-Gilgit-Baltistan-Muzaffarabad & Uttarakhand during next 7 days.

Northeast India:

- ❖ **Extremely heavy rainfall** very likely at isolated places over Assam on 12th August.
- ❖ Light/moderate rainfall at many places accompanied with thunderstorm, lightning and isolated **heavy rainfall** likely to continue over Arunachal Pradesh on 12th & 13th; Assam & Meghalaya during 12th-17th, Nagaland, Manipur, Mizoram & Tripura during 12th-15th August with **very heavy rainfall** over Arunachal Pradesh on 12th August.
- ❖ Light/moderate rainfall at many places accompanied with thunderstorm & lightning likely during next 2 days.

South Peninsular India:

- ❖ **Extremely heavy rainfall** very likely at isolated places over Telangana on 13th & 14th August.
- ❖ Isolated **heavy rainfall** likely over Karnataka during 14th-18th; Rayalaseema during 12th-14th; Coastal Andhra Pradesh & Yanam, Telangana during 12th-18th; Tamil Nadu, Puducherry & Karaikal on 12th & 13th, Kerala on 12th, 13th, 17th & 18th August with isolated **very heavy rainfall over Coastal Andhra Pradesh & Yanam on 13th & 14th, Rayalaseema on 13th; Telangana during 13th-16th August.**
- ❖ Strong surface winds (speed reaching 40-50 kmph) very likely over South Peninsular India during next 2 days.
- ❖ Light to moderate rainfall at most/many places accompanied with thunderstorm & lightning likely over Rayalaseema, Coastal Andhra Pradesh & Yanam and Telangana during next 5 days.

East & Central India:

- ❖ **Extremely heavy rainfall** very likely at isolated places over Sub-Himalayan West Bengal & Sikkim on 12th August.
- ❖ Isolated **heavy rainfall** likely over West Madhya Pradesh, Vidarbha; Chhattisgarh during 12th-18th; Andaman & Nicobar Islands on 12th; Sub-Himalayan West Bengal & Sikkim on 14th, 17th & 18th; Bihar on 4th; Odisha on 12th & 16th August **with isolated very heavy rainfall over West Madhya Pradesh on 18th; Vidarbha, Chhattisgarh on 13th, 14th, 17th & 18th; Sub-Himalayan West Bengal & Sikkim on 13th; Bihar on 12th & 13th and Odisha during 13th-15th August.**
- ❖ Light to moderate rainfall at most/many places accompanied with thunderstorm & lightning likely over the region during next 5 days.

West India:

- ❖ Isolated **heavy rainfall** likely over Madhya Maharashtra during 13th-18th; Konkan & Goa during 12th-18th; Marathwada during 13th-16th; Gujarat Region during 16th-18th; Saurashtra & Kutch on 18th August **with isolated very heavy rainfall over Konkan & Goa, ghat areas of Madhya Maharashtra during 15th-18th August.**
- ❖ Light to moderate rainfall at many/some places very likely over the region during next 5 days.

Fishermen warning:

Fishermen are advised to avoid venturing into the following from 12th August to 17th August 2025 to the following Areas:

Arabian Sea: Most parts of westcentral Arabian Sea, few parts of southwest Arabian sea, east central, north Arabian Sea, along and off north Gujarat coast, adjoining northeast Arabian Sea during 12th to 14th, most parts of westcentral Arabian Sea & adjoining some parts of eastcentral Arabian Sea, southwest, southern parts of north Arabian Sea during 14th to 17th, over few parts of Comorin areas, Along and off the Somalia coast & Oman coast and adjoining sea areas during 12th to 17th August; along and off south Konkan & Goa on 12th and entire Konkan & Goa during 13th to 17th; along and off Yemen coast during 12th & 16th August.

Bay of Bengal: Along and off Sri Lanka coast, over most parts of south Bay of Bengal, over Gulf of Mannar and along and off south Tamil Nadu coast during 12th to 17th, over most parts of central Bay of Bengal, Andaman Sea during 12th to 16th; along and off Andhra Pradesh coast, Odisha coasts during 13th to 17th August except only north Andhra Pradesh coasts on 16th; and over few parts of north Bay of Bengal during 13th to 16th August.

ii. Weather conditions and forecast over Delhi/NCR during 12th to 15th August, 2025 (Annexure IV)

For more details, kindly refer National Weather Bulletin:

https://mausam.imd.gov.in/responsive/all_india_forecast_bulletin.php

For District wise warnings refer: <https://mausam.imd.gov.in/responsive/districtWiseWarningGIS.php>

For Fishermen warning refer <https://rsmcnewdelhi.imd.gov.in/fishermen-warning.php>

Rainfall recorded (in cm) during past 24 hours till 0830 hours IST of today, the 12th August:

Jammu-Kashmir: Reasi ARG (dist Reasi) 28; Reasi Kvk AWS (dist Reasi) 23; Kathua (dist Kathua), Katra (dist Reasi) 20 Each; Udhampur(IAF) (dist Udhampur) 17; Kathua ARG (dist Kathua) 15; Jammu AWS (dist Jammu), Samba AWS (dist Samba) 10 Each; Jammu (dist Jammu) 9;

Punjab: Madhopur (dist Pathankot) 20; Malikpur (dist Pathankot) 18; Pathankot ARG (dist Pathankot) 16; Phangota (dist Pathankot) 14; Shahpur Kandi (dist Pathankot) 10; Kvk Pathankot AWS (dist Pathankot) 7;

Telangana: Sangem (dist Warangal) 18; Kodakandla (dist Jangaon) 13; Jajireddigudem (dist Suryapet) 12; Kusumanchi (dist Khammam) 10; Narsampet (dist Warangal), Zaffergadh (dist Jangaon), Parvathagiri (dist Warangal) 9 Each; Chennaraopet (dist Warangal), Hanamkonda (dist Hanumakonda), Kothaguda (dist Mahabubabad), Aswapuram (dist B. Kothagudem), Noothankal (dist Suryapet) 8 Each; Nalgonda (dist Nalgonda), Pedda Adiserlapalle (dist Nalgonda), Nallabelly (dist Warangal), Manuguru (dist B. Kothagudem) 7 Each;

Himachal Pradesh: Nagrota Surian (dist Kangra) 18; Guler (dist Kangra) 16; Ghamroor (dist Kangra) 11; Nadaun (dist Hamirpur), Dehra Gopipur (dist Kangra) 8 Each; Palampur (dist Kangra), Jogindarnagar (dist Mandi), Bharari (dist Hamirpur), Kangra AP (dist Kangra), Sujanpur Tira (dist Hamirpur) 7 Each;

East Uttar Pradesh: Kheri Lakhimpur (dist Kheri) 12; Ayoadhya (dist Ayodhya) 11; Nighasan (dist Kheri) 7;

Coastal Andhra Pradesh & Yanam: Komarada (dist Parvathipuram Manyam) 10; Bapatla (dist Bapatla) 8; Macherla (dist Palnadu) 7;

Sub Himalayan West Bengal & Sikkim: Palashbari Tea Estate (dist Jalpaiguri) 10; Gyalsing PTO (dist Gyalshing) 9; Namthang (dist Namchi), Siliguri PTO (dist Darjeeling) 8 Each; Mogulkata Tea Estate (dist Jalpaiguri) 7;

Jharkhand: Purvi Tundi (dist Dhanbad) 10;

Bihar: Sarmera (dist Nalanda) 10; Kusheswarstan (dist Darbhanga) 7;

Uttarakhand: Dhanaulti (dist Garhwal Tehri), Mori (dist Uttarkashi) 10 Each; Narendranagar (dist Garhwal Tehri) 9;

West Madhya Pradesh: Pathari (dist Vidisha) 9;

Gangetic West Bengal: Tilpara Barrage (dist Birbhum), Kandi (dist Murshidabad) 9 Each;

Chhattisgarh: Kusmi (dist Balrampur) 8;

Assam & Meghalaya: Srijangram ARG (dist Bongaigaon) 8; Williamnagar (dist East Garo Hills), Dhemaji (dist Dhemaji) 7 Each;

Rayalaseema: Chinnamandem (dist Annamayya District) 7;

Andaman & Nicobar Islands: Hut Bay (dist South Andaman) 7;

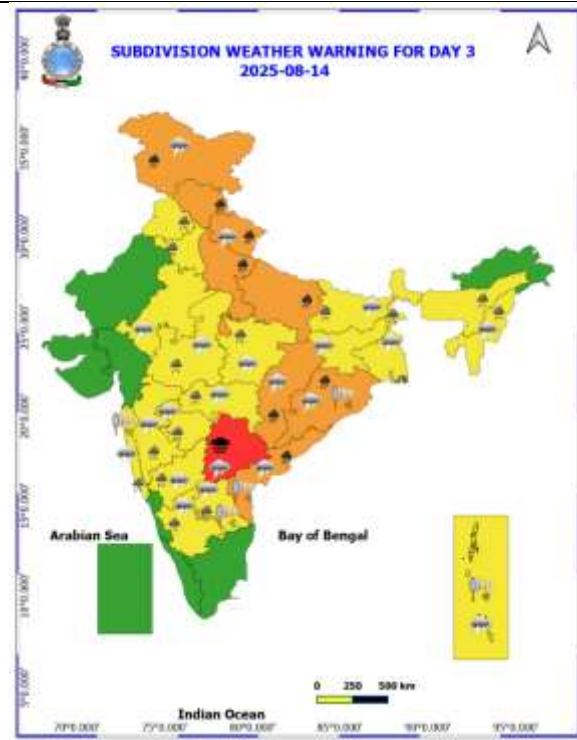
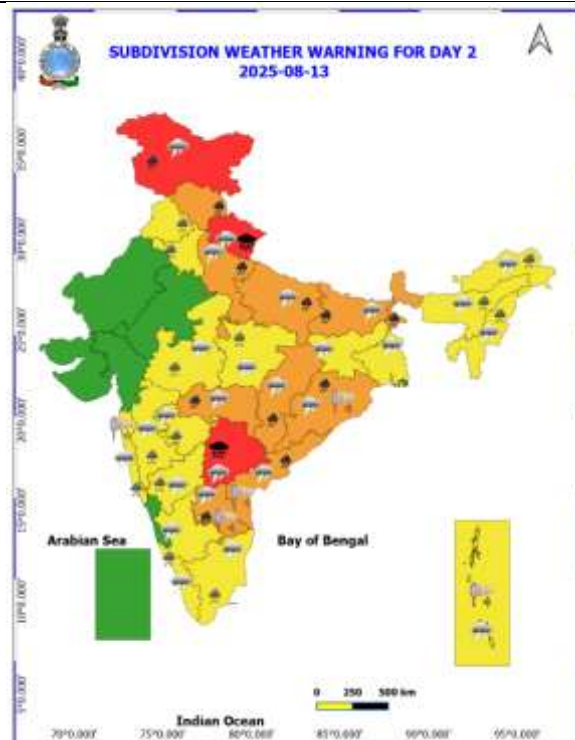
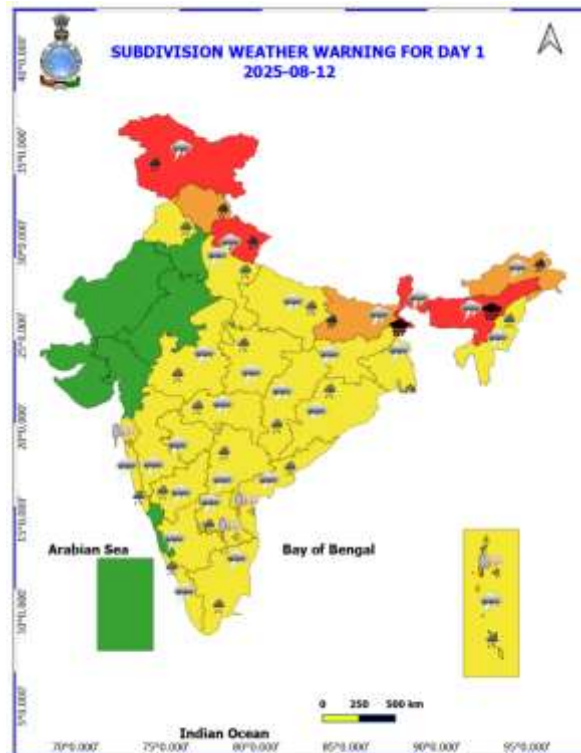
East Madhya Pradesh: Amanganj (dist Panna) 7;

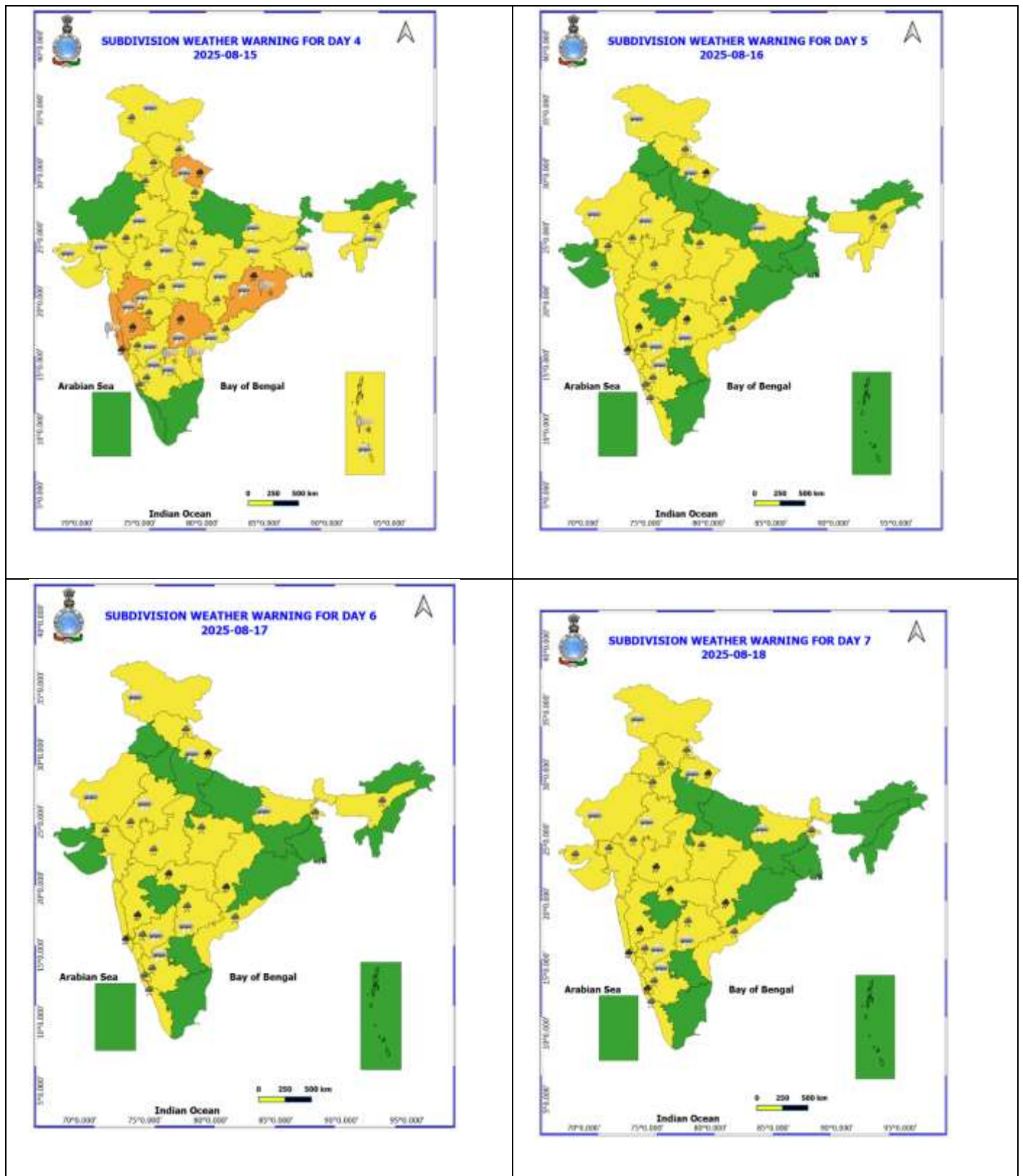
Haryana: Nilokheri (dist Karnal) 7;

Odisha: Pattamundai (dist Kendrapara) 7.

Table-1								
7 Days Rainfall Forecast								
S.No.	Subdivision	11- Aug	12- Aug	13- Aug	14- Aug	15- Aug	16- Aug	17- Aug
		Day 1	Day 2	Day 3	Day 4	Day 5	Day 6	Day 7
1	ANDAMAN & NICOBAR ISLANDS	WS	WS	WS	WS	WS	WS	WS
2	ARUNACHAL PRADESH	WS	WS	FWS	FWS	SCT	SCT	SCT
3	ASSAM & MEHGHALAYA	WS	WS	WS	FWS	FWS	FWS	FWS
4	NAGALAND, MANIPUR, MIZORAM AND TRIPURA	FWS	WS	FWS	FWS	FWS	FWS	SCT
5	SUB HIMALAYAN WEST BENGAL & SIKKIM	WS	WS	WS	FWS	FWS	FWS	WS
6	GANGETIC WEST BENGAL	SCT	FWS	FWS	WS	WS	FWS	FWS
7	ODISHA	SCT	FWS	WS	FWS	SCT	SCT	SCT
8	JHARKHAND	SCT	FWS	WS	FWS	FWS	FWS	WS
9	BIHAR	FWS	WS	FWS	SCT	SCT	SCT	SCT
10	EAST UTTAR PRADESH	FWS	FWS	WS	FWS	SCT	SCT	SCT
11	WEST UTTAR PRADESH	SCT	SCT	FWS	WS	FWS	SCT	SCT
12	UTTARAKHAND	WS	WS	WS	WS	WS	WS	WS
13	HARYANA, CHANDIGARH & DELHI	SCT	ISOL	SCT	FWS	FWS	SCT	FWS
14	PUNJAB	SCT	ISOL	SCT	FWS	FWS	SCT	SCT
15	HIMACHAL PRADESH	WS	WS	WS	WS	WS	FWS	FWS
16	JAMMU AND KASHMIR AND LADAKH	SCT	SCT	FWS	WS	WS	SCT	SCT
17	WEST RAJASTHAN	ISOL	ISOL	ISOL	ISOL	ISOL	ISOL	ISOL
18	EAST RAJASTHAN	ISOL	ISOL	ISOL	SCT	SCT	SCT	SCT
19	WEST MADHYA PRADESH	SCT	SCT	FWS	FWS	WS	WS	WS
20	EAST MADHYA PRADESH	FWS	FWS	WS	WS	WS	WS	WS
21	GUJRAT REGION	SCT	SCT	SCT	SCT	SCT	FWS	FWS
22	SAURASHTRA & KUTCH	SCT	SCT	SCT	SCT	SCT	FWS	FWS
23	KONKAN & GOA	FWS	WS	WS	WS	WS	WS	WS
24	MADHYA MAHARASHTRA	ISOL	ISOL	SCT	SCT	SCT	SCT	SCT
25	MARATHWADA	ISOL	ISOL	ISOL	SCT	SCT	SCT	SCT
26	VIDARBHA	SCT	FWS	WS	WS	WS	WS	WS
27	CHHATTISGARH	SCT	FWS	WS	WS	WS	WS	WS
28	COASTAL ANDHRA PRADESH	SCT	FWS	FWS	WS	WS	FWS	SCT
29	TELANGANA	WS	WS	WS	WS	WS	WS	WS
30	RAYALASEEMA	FWS	FWS	FWS	FWS	FWS	SCT	SCT
31	TAMILNADU & PUDUCHERRY	SCT	SCT	SCT	ISOL	ISOL	ISOL	ISOL
32	COSTAL KARNATAKA	WS	WS	WS	WS	WS	WS	WS
33	NORTH INTERIOR KARNATAKA	FWS	FWS	WS	WS	WS	WS	WS
34	SOUTH INTERIOR KARNATAKA	FWS	FWS	WS	WS	FWS	FWS	FWS
35	KERALA AND MAHE	WS	WS	WS	WS	WS	WS	WS
36	LAKSHADWEEP	FWS	FWS	FWS	FWS	FWS	WS	WS

- As the lead period increases forecast accuracy decrease.





- Action may be taken based on ORANGE AND REDCOLOUR warnings.
- Vulnerable regions likely urban and hilly areas action may be initiated for heavy rainfall warning.
- As the lead period increases forecast accuracy decreases.

Detailed districtwise Multi Hazard weather warning for next five days available at <https://mausam.imd.gov.in/responsive/districtWiseWarningGIS.php>

Weather forecast over Delhi/NCR during 12th August to 15th August 2025**Past Weather:**

There has been decrease in minimum and maximum temperatures in past 24 hours over Delhi. The minimum temperatures are in the range of 23-25°C and maximum temperatures were in the range of 32-34°C. The minimum temperatures are below normal upto 2-4 °C and maximum temperatures were below normal upto 0-2 °C over Delhi. South westerly winds prevailed with wind speed upto 22 kmph in past 24 hours over Delhi. Maximum rainfall of 55.0 mm has been recorded at Pusa during the past 24 hrs over Delhi. Generally cloudy sky conditions with a wind speed of upto 10-15 kmph from the southwest direction prevailed over the region in the forenoon today.

Weather Forecast:

12.08.2025: Generally cloudy sky. Possibility of one or two spell of very light to light rain/thundershowers towards night. The maximum temperatures over Delhi are likely to be in the range of 31 to 33°C. The maximum temperature will be near normal. The predominant surface wind will likely to be from the northwest direction with a wind speed of 10-15 kmph during afternoon hours. The wind speed remains same upto 10-15 kmph from the southwest direction during the evening and night.

13.08.2025: Generally cloudy sky. Possibility of one or two spells of very light to light rain/ thundershowers towards evening/night. The maximum and minimum temperatures over Delhi are likely to be in the range of 33 to 35°C and 23 to 25 °C respectively. The minimum temperature will be below normal up to 1 to 3°C and the maximum temperature will be near normal. The predominant surface wind will likely to be from the west direction with a wind speed of upto 10-15 kmph during morning hours and afternoon hours. The wind speed will decrease to 05-10 kmph from the south direction during evening and night.

14.08.2025: Generally cloudy sky. Possibility of few spells of light to moderate rain/ thundershowers towards morning/forenoon. The maximum and minimum temperatures over Delhi are likely to be in the range of 31 to 33°C and 23 to 25°C respectively. The minimum temperature will be below normal up to 2 to 4°C and the maximum temperature will be near normal. The predominant surface wind will likely to be from the southeast direction with a wind speed of upto 05-10 kmph during morning hours, afternoon hours, evening and night.

15.08.2025: Generally cloudy sky. Possibility of few spells of very light to light rain/ thundershowers with higher probability during morning/forenoon hours. The maximum and minimum temperatures over Delhi are likely to be in the range of 31 to 33°C and 22 to 24°C respectively. The minimum temperature will be below normal up to 3 to 5°C and the maximum temperature will be below normal upto 1 to 3°C. The predominant surface wind will likely to be from the northeast direction with a wind speed of 10-15 kmph during morning hours. The wind speed will remain same upto 15-20 kmph from the north direction in the afternoon. The wind speed will decrease to 05-10 kmph from the northeast direction during evening and night.

Impact & Action Suggested due to

- ❖ **Extremely heavy rainfall** very likely at isolated places over Assam, Sub-Himalayan West Bengal & Sikkim on 12th; Uttarakhand on 13th and Telangana on 13th & 14th August
- ❖ **Very heavy rainfall** over Jammu, Himachal Pradesh during 12th-14th; Uttarakhand on 12th, during 14th-18th; Uttar Pradesh on 13th & 14th. Arunachal Pradesh on 12th; Coastal Andhra Pradesh & Yanam on 13th & 14th, Rayalaseema on 13th; Telangana during 13th-16th; West Madhya Pradesh on 18th; Vidarbha, Chhattisgarh on 13th, 14th, 17th & 18th; Sub-Himalayan West Bengal & Sikkim on 13th; Bihar on 12th & 13th and Odisha during 13th-15th and Konkan & Goa, ghat areas of Madhya Maharashtra during 15th-18th August.

Impact Expected

- Localized Flooding of roads, water logging in low lying areas and closure of underpasses mainly in urban areas of the above region.
- Occasional reduction in visibility due to heavy rainfall.
- Disruption of traffic in major cities due to water logging in roads leading to increased travel time.
- Minor damage to kutcha roads.
- Possibilities of damage to vulnerable structure.
- Localized Landslides/Mudslides/landslips/mudslips/landsinks/mudsinks.
- Damage to horticulture and standing crops in some areas due to inundation.
- It may lead to riverine flooding in some river catchments (for riverine flooding please visit Web page of CWC)

Action Suggested

- Check for traffic congestion on your route before leaving for your destination.
- Follow any traffic advisories that are issued in this regard.
- Avoid going to areas that face the water logging problems often.
- Avoid staying in vulnerable structure.

Agromet advisories for likely impact of Heavy / Heavy to Very Heavy Rainfall

- In **Sub-Himalayan West Bengal**, make provision to drain out excess water from rice, ginger, vegetable fields and fruit orchards in **Hill Zone** and *aman* paddy and vegetable fields in **Terai Zone**. Cover the chilli seedlings with plastic to protect them from heavy rains in **Terai Zone**.
- In **Bihar**, make provisions to drain out excess water from standing crops such as maize, nurseries of onion, chilli, and cauliflower in **North West Alluvial Plain Zone**; maize, finger millet, ragi, kodo, sava, china, etc. in **North East Alluvial Zone**.
- In **Odisha**, make arrangements for draining out excess water from the fields of pulses, maize, groundnut and vegetables in **South Eastern Ghat region**.
- In **Jammu and Kashmir**, do not allow water to stagnate in fields of maize, pulses, cowpea, bajra and vegetables in **Sub Tropical Zone**. Proper drainage should be ensured in the fields of paddy, maize, Pulses, horticultural and vegetable crops in **Intermediate Zone**.
- In **Uttarakhand**, make necessary arrangements to drain out excess water from the fields of already sown / transplanted rice, sugarcane, maize, black gram, green gram, groundnut, pigeon pea, finger millet, soybean and vegetables in **Bhabar and Tarai Zone**; and from barnyard millet, finger millet, green gram and black gram in **Sub Humid Sub Tropic Zone**. In **Hill Zone**, strengthen the bunds to prevent surface runoff of water. Postpone sowing of vegetable pea till soil attains optimum moisture level. Maintain proper drainage channels in vegetable and crop fields. Undertake harvesting of matured capsicum fruits. Postpone sowing of vegetable pea until the soil attains optimum moisture, especially under excessive wet soil conditions.
- In **Himachal Pradesh**, provide proper drainage channels in rice, maize, kidney beans, finger millet, apple, pomegranate and vegetable fields in **Sub Montane and Low Hills Sub Tropical Zone**; paddy, maize, pulses, plantation and vegetable crops in **High Hills Sub Temperate Wet Zone**; and maize, ginger, turmeric and vegetable fields in **Mid Hills Sub Humid Zone**.
- In **Uttar Pradesh**, maintain proper drainage in fields of rice, pigeon pea, sugarcane and vegetable crops in **South Western Semi Arid Zone**, make necessary arrangements for drainage of excess water from the fields pigeon pea, chilli and onion in **Bundelkhand Zone**; autumn sugarcane, spring sugarcane, paddy, pigeon

pea, maize, green gram, black gram and vegetables in South Western Semi-Arid Zone; and pigeon pea, soybean, maize, groundnut, green gram, black gram and barnyard millet in Eastern Plain Zone.

- **In Madhya Pradesh**, provide adequate drainage in the fields of maize, soybean, blackgram, cotton, and pigeon pea in **Vindhyan Plateau Zone**; maize, soybean, cotton, sugarcane and vegetables in **Satpura Plateau Zone**; rice, soybean, maize, sugarcane and vegetables in **Central Narmada Valley Zone** and soybean, pigeon pea, cotton and vegetables in **Nimar Valley Zone**.
- **In Chhattisgarh**, drain out excess water from rice nurseries, fields of soybean, pigeon pea, green gram, black gram, maize, sugarcane and vegetables in **Plain Zone**; fields of rice, minor millets, maize, pulses and oilseeds in **Bastar Plateau Zone** and fields of pigeon pea, vegetables and transplanted rice in **North Hill Zone**.
- **In Arunachal Pradesh**, ensure proper drainage in rice, maize, finger millet, soybean, vegetables, and fruit orchards to avoid waterlogging. Provide strong support to fruit-bearing plants to prevent them from bending or breaking during heavy rains.
- **In Assam**, to prevent waterlogging, ensure proper drainage in *Sali* rice, green gram and pigeon pea fields and banana orchards in **Lower Brahmaputra Valley Zone**; *Sali* rice and sugarcane fields in **North Bank Plain Zone** and *Sali* rice fields in **Upper Brahmaputra Valley Zone**.
- **In Meghalaya**, ensure proper drainage in rice, maize, turmeric, chilli, okra and bitter gourd fields to prevent waterlogging. Provide staking/support to tall and fragile crops like banana, papaya, bottle gourd etc. to prevent lodging.
- **In Tamil Nadu**, ensure proper drainage in sorghum fields to prevent waterlogging, especially in heavy soils and low-lying areas. Ensure proper drainage around the coconut plants to avoid root rot.
- **In Andhra Pradesh**, provide adequate drainage in the fields of paddy, maize, groundnut, cotton, blackgram, greengram, and pigeon pea in **Krishna Godavari region**.
- **In Telangana**, drain out excess water from rice nurseries and recently transplanted rice as well as from fields of cotton, maize, red gram, soybean, sugarcane, and vegetables.

Livestock / Fishery

- Keep the animals inside the shed during heavy rainfall and provide them balanced feed.
- Store feed and fodder in a safe place to prevent spoilage.
- Construct an outlet with proper netting around the ponds to drain out excess water, thereby preventing fish from escaping in case of overflow.

Agromet advisories for likely impact of Thunderstorm / Gusty Winds / Squally Winds

- Provide mechanical support to horticultural crops and staking or support to vegetables and young fruit plants / fruit-bearing plants to avoid lodging due to strong winds.

Flash flood guidance:

24 hours Outlook for the Flash Flood Risk (FFR) till 1130 IST of 13-08-2025 :

Moderate to High flash flood risk likely over few watersheds & neighbourhoods of following Met Sub-divisions during next 24 hours.

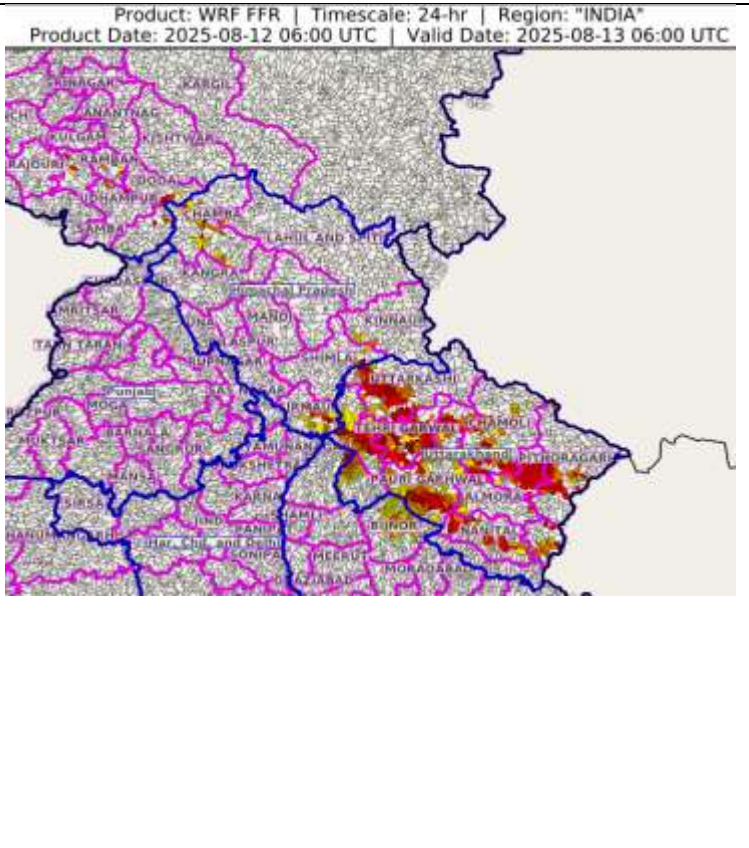
Himachal Pradesh - Chamba, Kangra, Kinnaur, Kullu, Mandi, Shimla and Sirmaur districts.

Jammu & Kashmir & Ladakh - Doda, Kathua, Rajouri, Ramban, Riasi and Udhampur districts.

Uttarakhand - Almora, Bageshwar, Chamoli, Champawat, Dehradun, Haridwar, Nanital, Pauri Garhwal, Pithoragarh, Rudraprayag, Tehri Garwal and Uttarkashi districts.

West Uttar Pradesh - Bijnor and Sharanpur districts.

Surface runoff/ Inundation may occur at some fully saturated soils & low-lying areas over Area of Concern (AoC) as shown in map due to expected rainfall occurrence in next 24 hours.

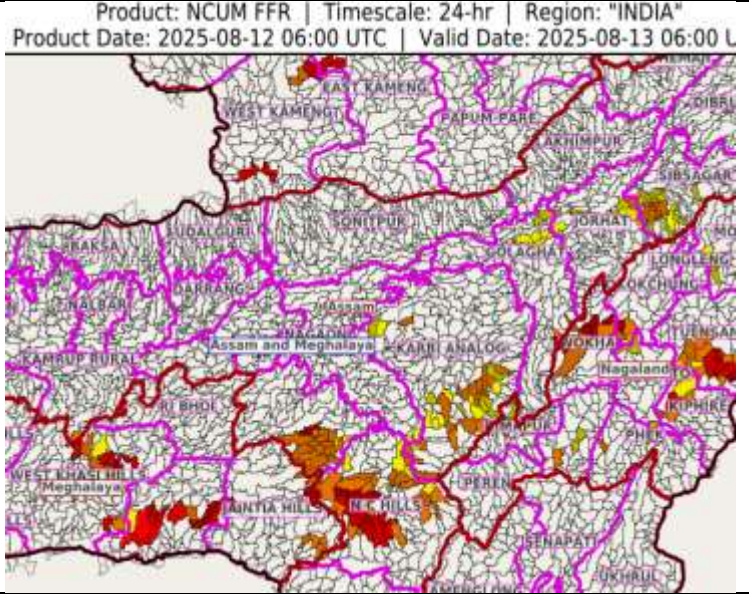


24 hours Outlook for the Flash Flood Risk (FFR) till 1130 IST of 13-08-2025 :

Low to Moderate flash flood risk likely over few watersheds & neighbourhoods of following Met Sub-divisions during next 24 hours.

Assam & Meghalaya - Golaghat, Jorhat, Karbi Analog, N.C Hills, Sibsagar, East Khasi Hills, West Khasi Hills and Jaintia Hills districts.

Surface runoff/ Inundation may occur at some fully saturated soils & low-lying areas over Area of Concern (AoC) as shown in map due to expected rainfall occurrence in next 24 hours.

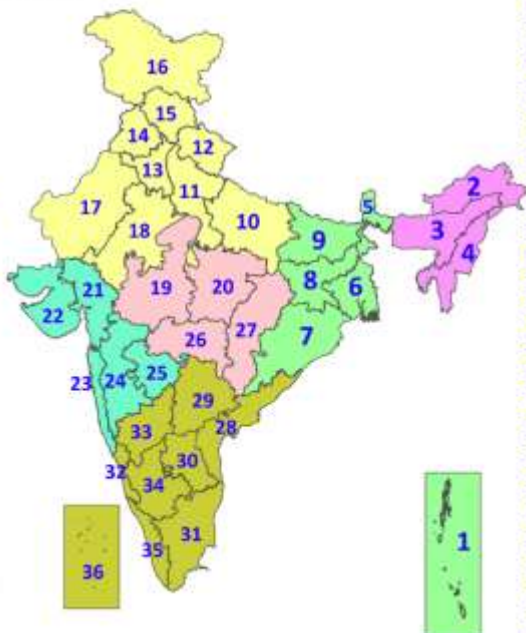


Legends & abbreviations:

- ❖ **Heavy Rain:**64.5-115.5mm; **Very Heavy Rain:**115.6-204.4mm; **Extremely Heavy Rain:** >204.4mm.
- ❖ **Obsy:** Observatory; Automatic Weather Station; **ARG:** Automatic Rain Gauge; **dist:** District; **NH:** National Highway; **KVK:** Krishi Vigyan Kendra; **DVC:** Damodar Valley Corporation; **PTO:** Part Time Office, **Aero:** Aerodrome, **IAF:** Indian Air Force.
- ❖ **Region wise classification of meteorological Sub-Divisions:**
 - **Northwest India:** Western Himalayan Region (Jammu-Kashmir-Ladakh-Gilgit-Baltistan-Muzaffarabad, Himachal Pradesh and Uttarakhand); Punjab, Haryana-Chandigarh-Delhi; West Uttar Pradesh, East Uttar Pradesh, West Rajasthan and East Rajasthan.
 - **Central India:** West Madhya Pradesh, East Madhya Pradesh, Vidarbha and Chhattisgarh.
 - **East India:** Bihar, Jharkhand, Sub-Himalayan West Bengal & Sikkim; Gangetic West Bengal, Odisha and Andaman & Nicobar Islands.
 - **Northeast India:** Arunachal Pradesh, Assam & Meghalaya and Nagaland, Manipur, Mizoram & Tripura.
 - **West India:** Gujarat Region, Saurashtra & Kutch, Konkan & Goa, Madhya Maharashtra and Marathawada.
 - **South India:** Coastal Andhra Pradesh & Yanam, Telangana, Rayalaseema, Coastal Karnataka, North Interior Karnataka, South Interior Karnataka, Kerala & Mahe, Tamil Nadu, Puducherry & Karaikal and Lakshadweep.

LEGENDS

1. अंडमान और निकोबार द्वीपसमूह
2. अरुणाचल प्रदेश
3. असम और मेघालय
4. नागालैंड, मणिपुर, मिजोरम और त्रिपुरा
5. उप-हिमालयी पश्चिम बंगाल और सिक्किम
6. गंगीय पश्चिम बंगाल
7. ओडिशा
8. झारखंड
9. बिहार
10. पूर्वी उत्तर प्रदेश
11. पश्चिम उत्तर प्रदेश
12. उत्तराखंड
13. हरियाणा, चंडीगढ़ और दिल्ली
14. पंजाब
15. हिमाचल प्रदेश
16. जम्मू और कश्मीर और लद्दाख
17. पश्चिम राजस्थान
18. पूर्वी राजस्थान
19. पश्चिम मध्य प्रदेश
20. पूर्वी मध्य प्रदेश
21. गुजरात
22. सौराष्ट्र
23. कोंकण और गोवा
24. मध्य महाराष्ट्र
25. मराठवाड़ा
26. विदर्भ
27. छत्तीसगढ़
28. तटीय आंध्र प्रदेश और यनम
29. तेलंगाना
30. रायलसीमा
31. तमिलनाडु, पुडुचेरी और कराईकल
32. तटीय कर्नाटक
33. आंतरिक उत्तरी कर्नाटक
34. आंतरिक दक्षिणी कर्नाटक
35. केरल और माहे
36. लक्षद्वीप



1. Andaman & Nicobar Islands
2. Arunachal Pradesh
3. Assam & Meghalaya
4. Nagaland, Manipur, Mizoram & Tripura
5. Sub-Himalayan West Bengal & Sikkim
6. Gangetic West Bengal
7. Odisha
8. Jharkhand
9. Bihar
10. East Uttar Pradesh
11. West Uttar Pradesh
12. Uttarakhand
13. Haryana, Chandigarh & Delhi
14. Punjab
15. Himachal Pradesh
16. Jammu & Kashmir and Ladakh
17. West Rajasthan
18. East Rajasthan
19. West Madhya Pradesh
20. East Madhya Pradesh
21. Gujarat
22. Saurashtra
23. Konkan & Goa
24. Madhya Maharashtra
25. Marathwada
26. Vidarbha
27. Chhattisgarh
28. Coastal Andhra Pradesh & Yanam
29. Telangana
30. Rayalaseema
31. Tamilnadu, Puducherry & Karaikal
32. Coastal Karnataka
33. North Interior Karnataka
34. South Interior Karnataka
35. Kerala & Mahe
36. Lakshadweep

SPATIAL DISTRIBUTION (% of Stations reporting)

% Stations	Category	% Stations	Category
76-100	Widespread (WS/Most Places)	26-50	Scattered (SCT/A Few Places)
51-75	Fairly Widespread (FWS/Many Places)	1-25	Isolated (ISOL)



Fog



Heavy Rain



Very Heavy Rain



Extremely Heavy Rain



Thunder & Lightning



Hailstorm



Dust Raising Winds



Heavy Snow



Dust Storm



Heat Wave



Warm Night



Hot Day



Hot & Humid



Strong Surface Winds



Cold Wave



Cold Day



Ground Frost

COLOUR CODED WARNING

No Warning (No Action)
Watch (Be Aware)
Alert (Be Prepared To Take Action)
Warning (Take Action)

Probabilistic Forecast

Terms	Probability of Occurrence (%)
Unlikely	< 25
Likely	25 - 50
Very Likely	50 - 75
Most Likely	> 75

* Red colour warning does not mean "Red Alert", Red colour warning means "Take Action".

Forecast and Warning for any day is valid from 0830 hours IST of day till 0830 hours IST of next day.

For more details, kindly visit <https://mausam.imd.gov.in> or contact: 011-2434-4599

(Service to the Nation since 1875)

DEFINITION/CRITERIA

Rain/ Snow *

Heavy: 64.5 to 115.5 mm/cm *
Very Heavy: 115.6 to 204.4 mm/cm *
Extremely Heavy: > 204.4 mm/cm *

Heat Wave

When maximum temperature of a station reaches $\geq 40^{\circ}\text{C}$ for plains and $\geq 30^{\circ}\text{C}$ for hilly regions

(a) Based on Departure from normal

Heat Wave: Maximum Temperature Departure from normal 4.5°C to 6.4°C .

Severe Heat Wave: Maximum Temperature Departure from normal $\geq 6.5^{\circ}\text{C}$

(b). Based on Actual maximum temperature

Heat Wave: When actual maximum temperature $\geq 45^{\circ}\text{C}$.

Severe Heat Wave: When actual maximum temperature $\geq 47^{\circ}\text{C}$.

(c). Criteria for heat wave for coastal stations

When maximum temperature departure is $> 4.5^{\circ}\text{C}$ from normal. Heat Wave may be described provided maximum temperature $\geq 37^{\circ}\text{C}$.

Warm Night

When maximum temperature remains 40°C

Warm Night: When minimum temperature departure 4.5°C to 6.4°C .

Severe Warm Night: When minimum temperature departure $> 6.4^{\circ}\text{C}$.

Cold Wave

When minimum temperature of a station $\leq 10^{\circ}\text{C}$ for plains and $\leq 0^{\circ}\text{C}$ for hilly regions.

(a). Based on departure

Cold Wave: Minimum Temperature Departure from normal -4.5°C to -6.4°C .

Severe Cold Wave: Minimum Temperature Departure from normal $\leq -6.5^{\circ}\text{C}$

(b) Based on actual Minimum Temperature (for Plains only)

Cold Wave: When Minimum Temperature is $\leq 4.0^{\circ}\text{C}$

Severe Cold Wave: When Minimum Temperature is $\leq 2.0^{\circ}\text{C}$

(c) For Coastal Stations

When Minimum Temperature departure is $\leq -4.5^{\circ}\text{C}$ & actual Minimum Temperature is $\leq 15^{\circ}\text{C}$

Cold Day

When minimum temperature of a station $\leq 10^{\circ}\text{C}$ for plains and $\leq 0^{\circ}\text{C}$ for hilly regions

Based on departure

Cold Day: Maximum Temperature Departure from normal -4.5°C to -6.4°C .

Severe Cold Day: Maximum Temperature Departure from normal $\leq -6.5^{\circ}\text{C}$

Fog

Phenomenon of small droplets suspended in air and the horizontal visibility $< 1\text{km}$

Moderate Fog: When the visibility between 500-200 metres

Dense Fog: when the visibility between 50- 200 metres

Very Dense Fog: when the visibility < 50 metres

Thunderstorm

Sudden electrical discharges manifested by a flash of light (Lightning) and a sharp rumbling sound (thunder)

Dust/Sand Storm

An ensemble of particles of dust or sand energetically lifted to great heights by a strong and turbulent wind.

Frost

Ice deposits on ground

Air temperature $\leq 4^{\circ}\text{C}$ (over Plains)

Squall

A strong wind that rises suddenly, lasts for atleast 1 minute.

Moderate: Wind speed 52-61 kmph

Severe: Wind speed 62-67 kmph

Very Severe: Wind speed > 67 kmph

Sea State

Effect of various waves in the sea over specific area

Rough to very rough: Wind speed 41-62 kmph (22-33 knots) & Wave height 2.5-6 metre

High to very high: Wind speed 63-117 kmph (34-63 knots) & Wave height 6-14 metre

Phenomenal: Wind speed > 117 kmph (> 63 knots) & Wave height > 14 metre

Cyclone

Cyclonic Storm: Wind speed 62-87 kmph (34-47 knots)

Severe Cyclonic Storm: Wind speed 88-117 kmph (48-63 knots)

Very Severe Cyclonic Storm: Wind speed 118-165 kmph (64 - 89 knots)

Extremely Severe Cyclonic Storm: Wind speed 166-220 kmph (90 -119 knots)

Super Cyclone Storm: Wind speed > 220 kmph (> 119 knots)

* Red colour warning does not mean "Red Alert", Red colour warning means "Take Action".

Forecast and Warning for any day is valid from 0830 hours IST of day till 0830 hours IST of next day.

For more details, kindly visit <https://mausam.imd.gov.in> or contact: 011-2434-4599

(Service to the Nation since 1875)

Hot and Humid: When maximum temperatures remain 3°C above normal along with the above normal relative humidity.